



Recognizing a Patient's Mental Model

Its Effect on How Clinicians Use a Treatment Guideline*

Paul R. Falzer, Ph.D.

D. Melissa Garman, M.S.W., D.C.S.W.

Brent A. Moore, Ph.D.

• Preview

- *Background*

- ✦ Guidelines for treatment resistant schizophrenia
- ✦ The importance of illness perception

- *Research questions*

- ✦ How does the patient's model affect switching decisions?
- ✦ How do clinicians recognize the patient's model of illness?

- *Study procedures, participants, and results*

- *Conclusions and recommendations*

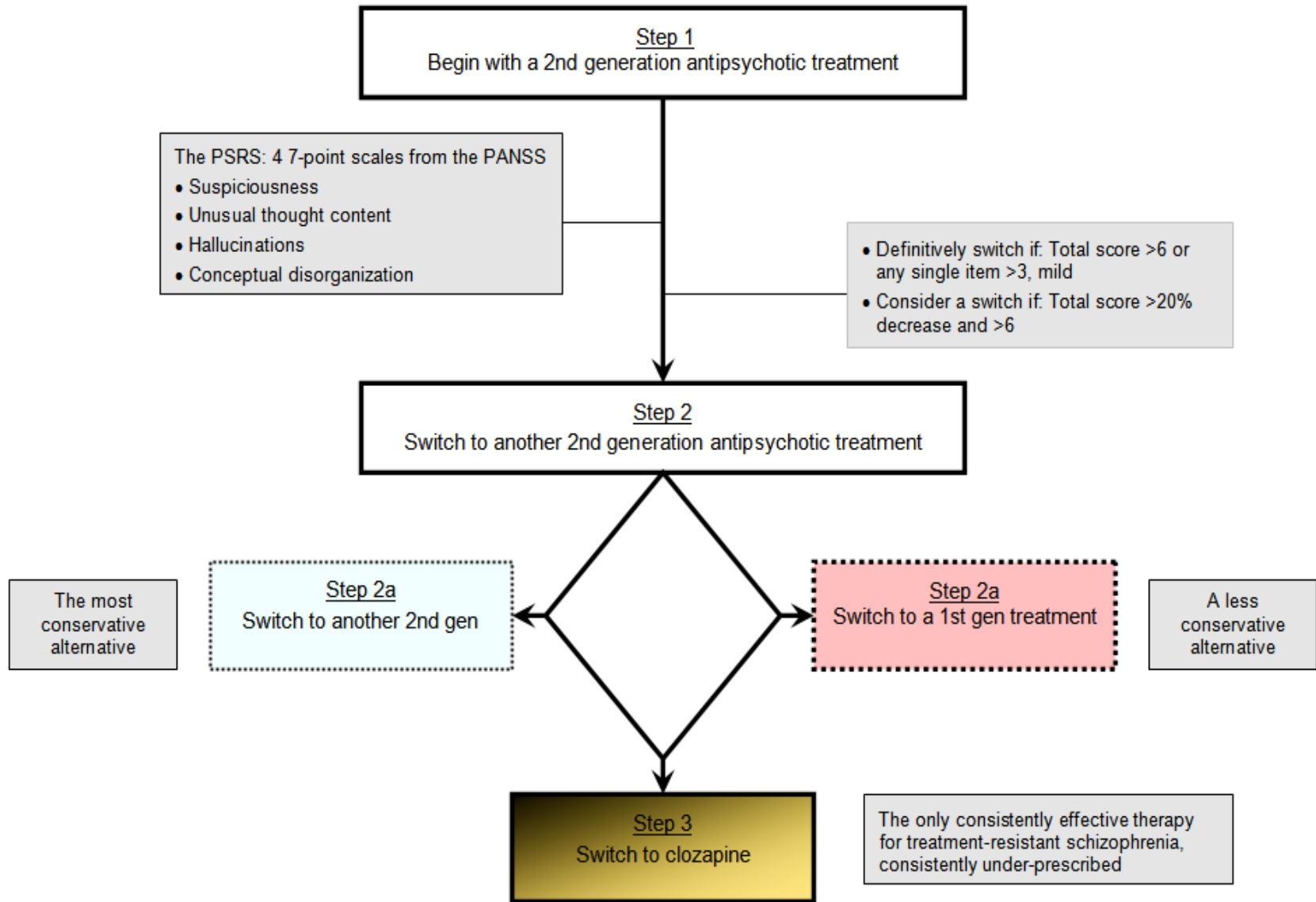
Schizophrenia Guidelines

- *They are decision aids, not standards of care*

From the American Psychiatric Association's schizophrenia guideline: "...not intended to be construed or to serve as a standard of medical care."

"The ultimate judgment regarding a particular clinical procedure or treatment plan must be made by the psychiatrist in light of the clinical data presented by the patient and the diagnostic and treatment options available."

The TIMA-SM Guideline



The impact of beliefs about mental health problems and coping on outcome in schizophrenia

F. LOBBAN*, C. BARROWCLOUGH AND S. JONES

University of Liverpool, UK; University of Manchester, UK

IPQS Factor	Depression	Quality of Life	Functioning	Positive Symptoms	Negative Symptoms
<i>Illness consequences</i>	X	X	X	X	X
<i>Understanding of illness</i>	X	X			X
<i>Timeline</i>	X			X	X
<i>Treatment control</i>	X	X			X
<i>Identity</i>	X	X		X	

- **Question: How do patients' models of illness influence how clinicians use the TIMA?**

- ***How does the patient's model affect switching decisions?***

- ✦ to clozapine
- ✦ to 1st gen treatment
- ✦ to a 2nd gen treatment

- ***How do clinicians recognize the patient's model of illness?***

- ✦ by its influence on adherence to treatment
 - ✦ by its role in the therapeutic alliance
 - ✦ by its effect on the treatment outcome
-

• Study Method

- ***Six case vignettes***

- Including the clinical picture and the patient's perspective

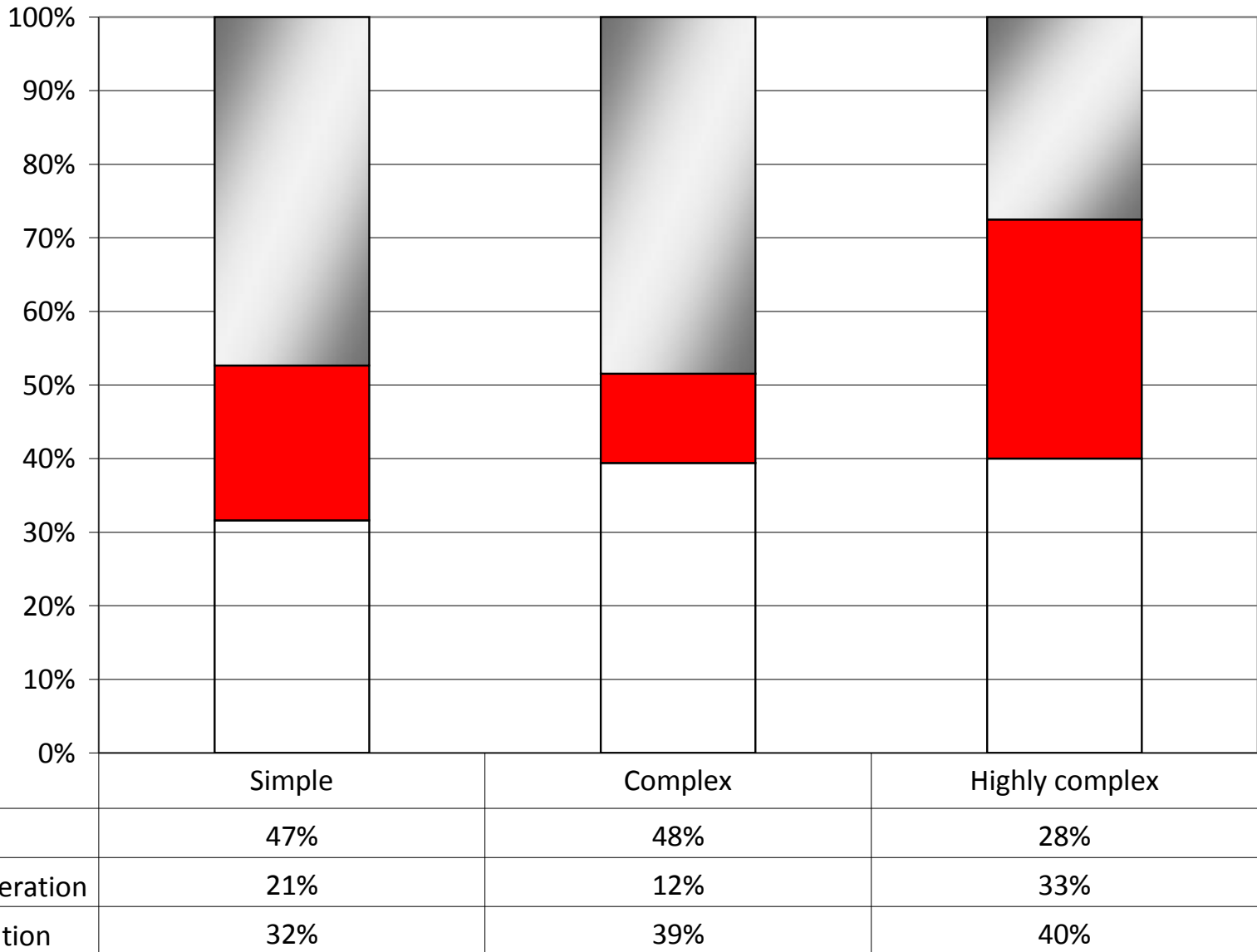
- ***Design: 3 x 2 within-subjects***

- ✦ Illness complications, 3 levels: None, 1, or 2
- ✦ Relationship between the clinical picture and the patient's perspective, 2 levels: congruent or incongruent

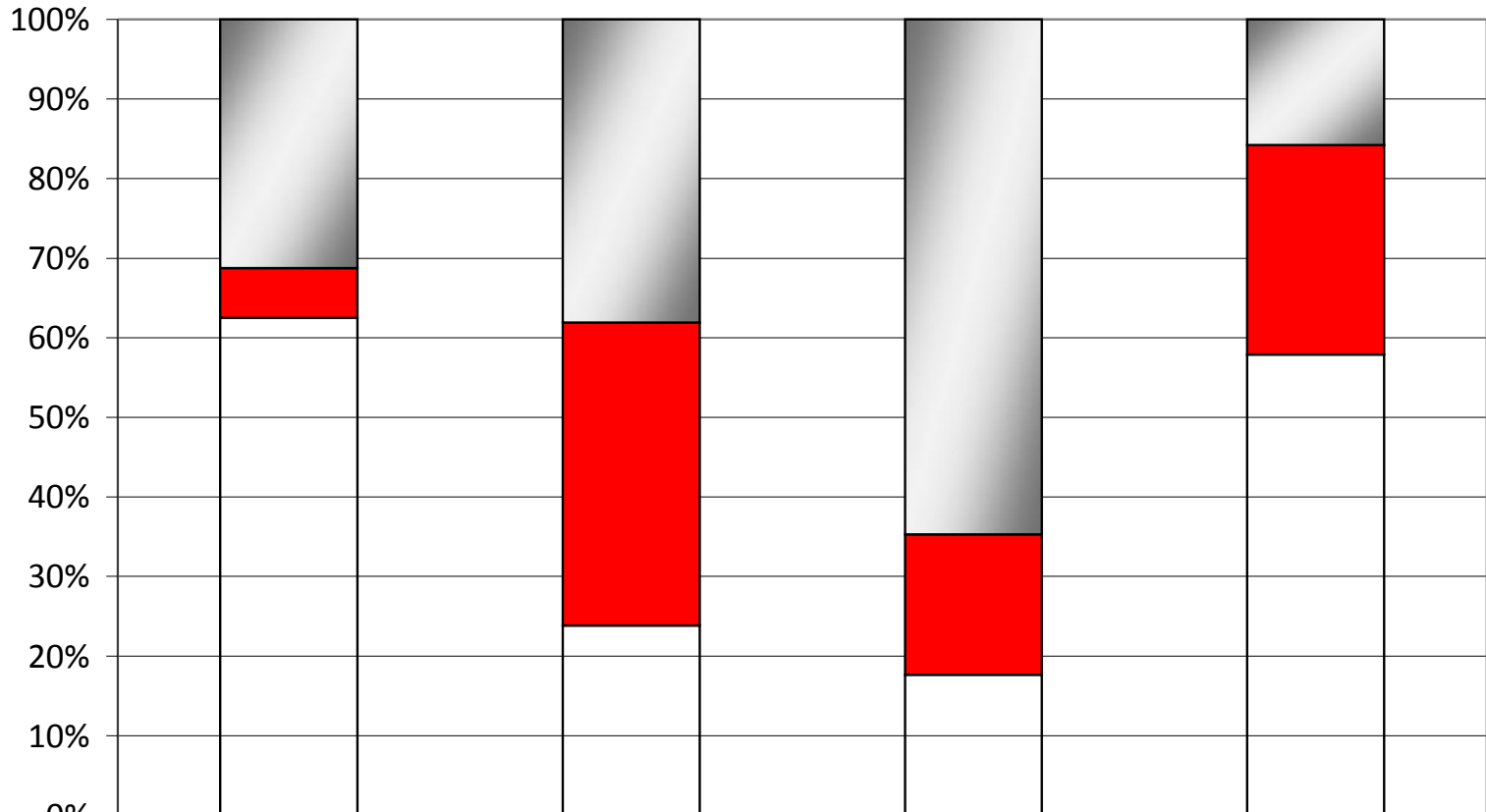
- ***Participants: 22 volunteer paid Yale psychiatric residents***

- ✦ Measures: First treatment recommendation; role of the patient's illness model in treatment decisions
 - ✦ Guideline endorsement rate: 84% overall
-

Effect of Case Complexity on Treatment Decisions



...Plus the Influence of Congruence



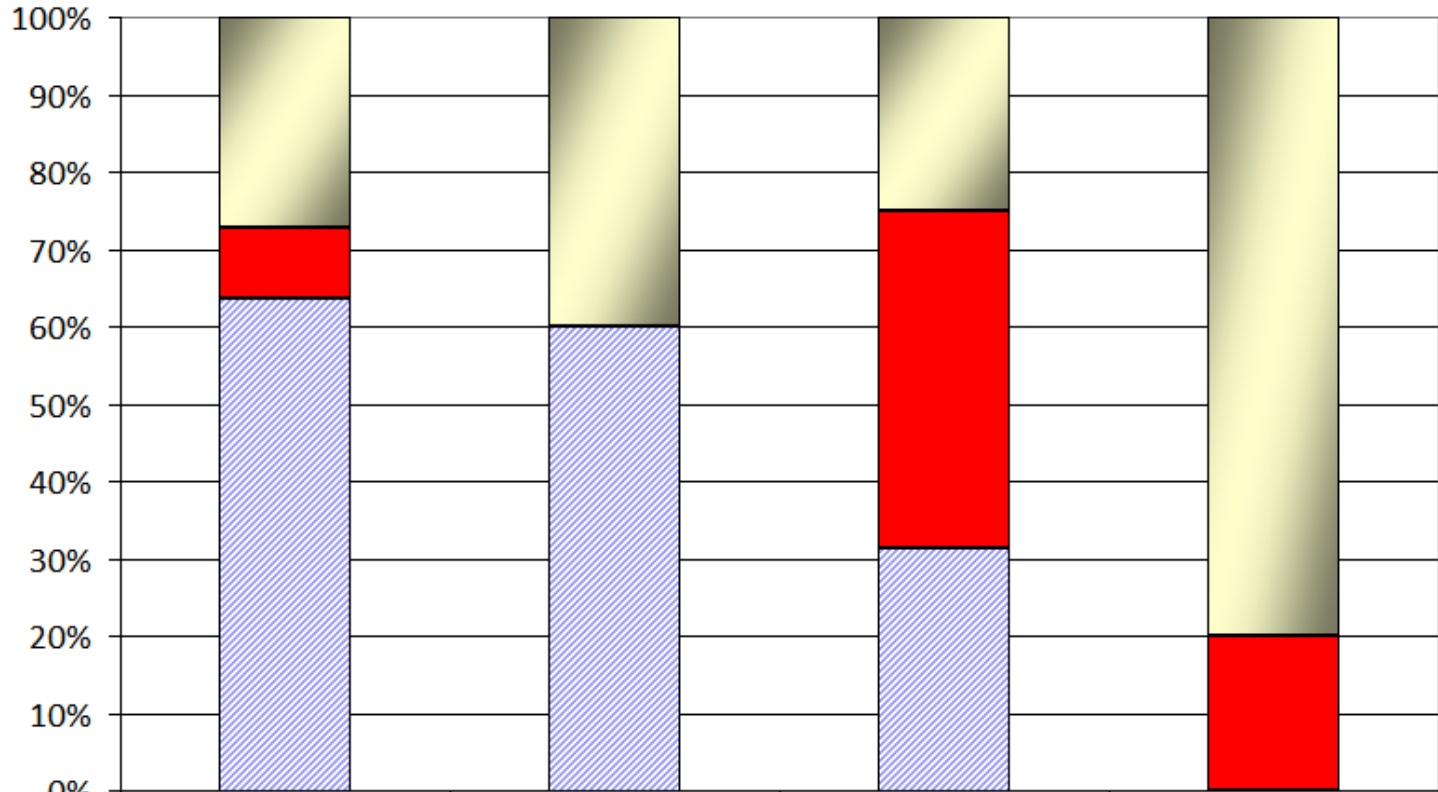
■ Clozapine	31%	38%	65%	16%
■ Second generation	6%	38%	18%	26%
■ First generation	63%	24%	18%	58%

- Is the patient's model important; if so, why?
 - *Views of clinicians*

	Yes	No
Is important in making treatment decisions*	15	2
Is a top 3 reason	13	9
because IP links to patient adherence	12	10
because IP links to treatment alliance	6	16
because IP links to clinical outcome	5	17

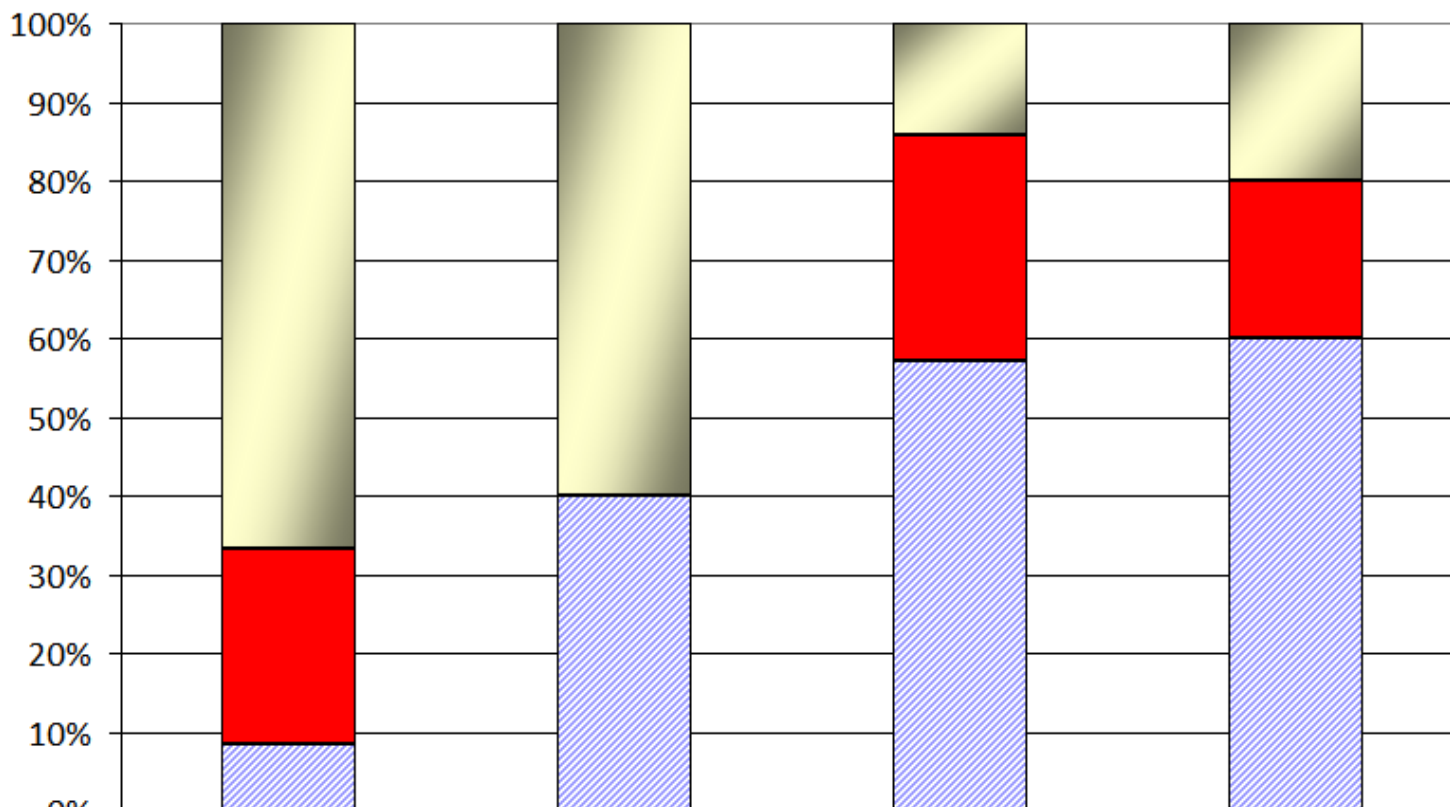
*15 clinicians said yes and gave a reason why; 5 said yes but gave no reason

The Patient's Model is Important Because It Influences the Outcome: *When the Model is Congruent with the Clinical Picture*



	Not important	Is important	Not important	Is important
	Complex		Highly complex	
■ Clozapine	27%	40%	25%	80%
■ Second generation	9%	0%	44%	20%
■ First generation	64%	60%	31%	0%

...When the Model is Incongruent With the Clinical Picture



■ Clozapine	67%	60%	14%	20%
■ Second generation	25%	0%	29%	20%
■ First generation	8%	40%	57%	60%

Does the patient's model of illness influence the outcome?

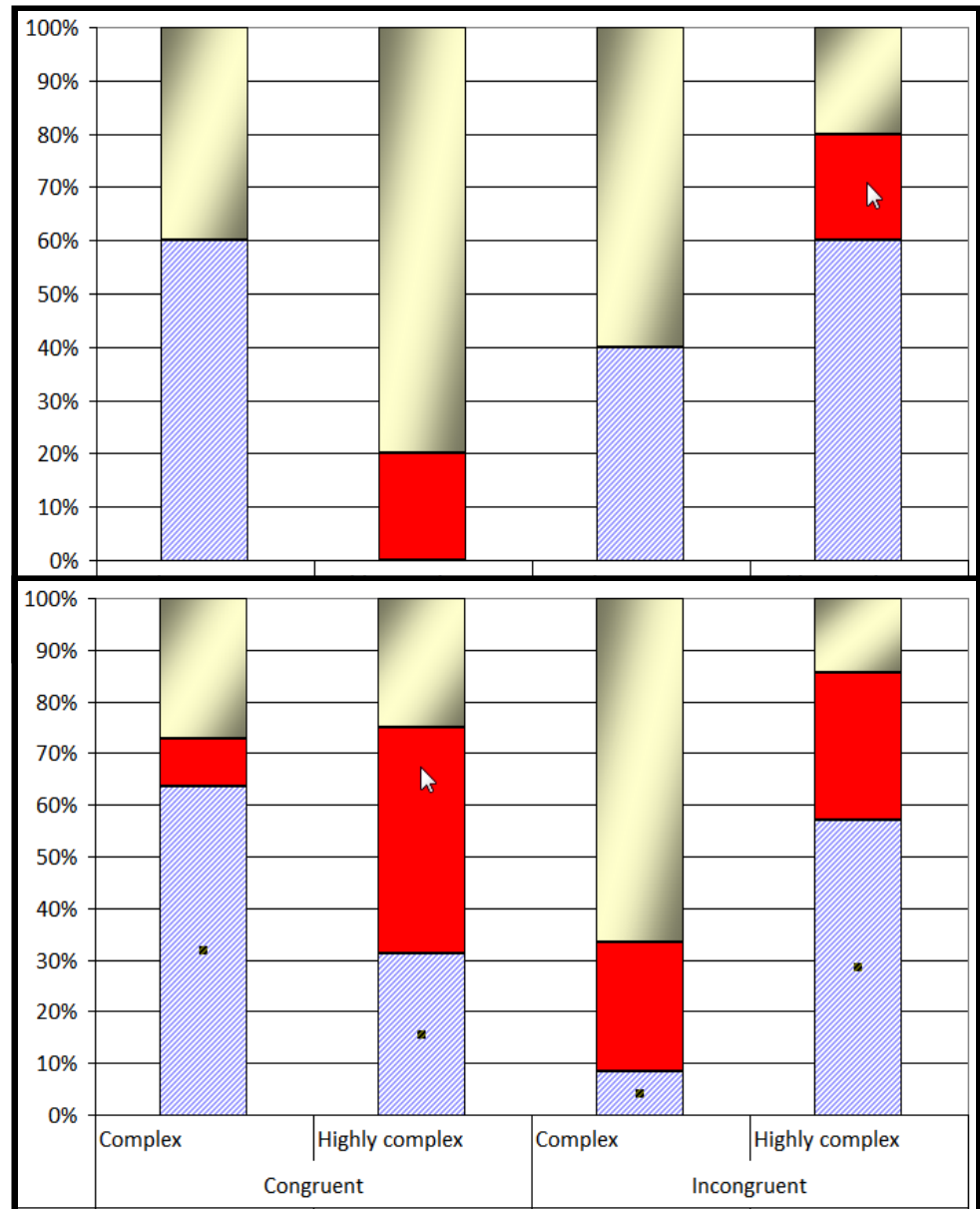
Clinicians who say yes

GEE Analysis

Effect	Wald chi square	Sig.
Complexity	1.451	.228
Congruence	.099	.753
Outcome	.037	.848
Complexity x Congruence	7.273	.007
Complexity x Outcome	3.947	.047
IPoutcome x Congruence	4.184	.041
Complexity x Outcome x Congruence	1.042	.307

df=1 for all tests

Clinicians who say no



Conclusions and Recommendation

- ***The problem***

- ✦ The guideline does not address illness perception phenomena
- ✦ Case complications and incongruence of patient perception with the clinical picture limit the clinician's exercise of options

- ***A proposed solution***

- ✦ Recognizing how the patient's models of illness influences the clinical outcome increases options and increases the use of effective treatments

- ***A recommendation***

- ✦ Incorporate recognition of the patient's model of illness into training programs and guidelines, to facilitate better clinical decisions and improve quality of care